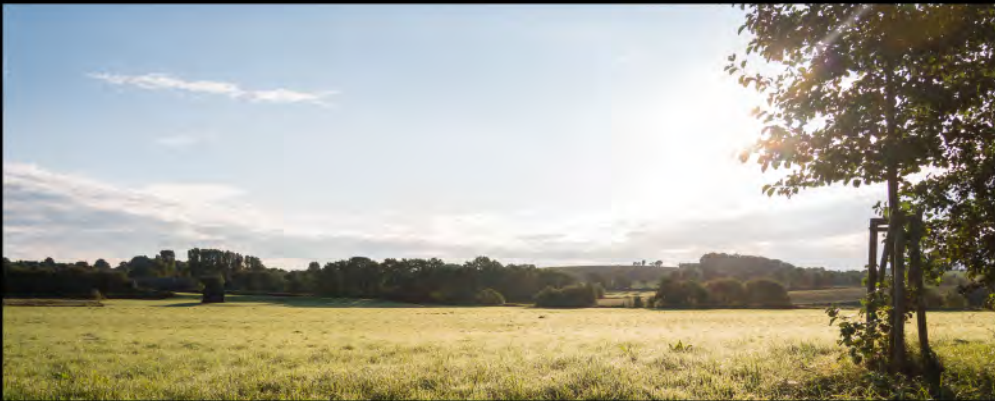
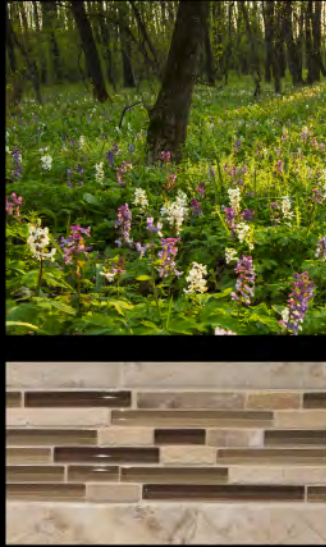


# BATTLE GROUND, WASHINGTON



OAK MEADOWS

CASCADEWEST.COM



# LOT SIZES

Lot 1 1.00 Acre

Lot 2 1.00 Acre

Lot 3 1.00 Acre

Lot 4 1.00 Acre

Lot 5 1.00 Acre

Lot 6 1.00 Acre

Lot 7 1.00 Acre

Lot 8 1.00 Acre

Lot 9 1.00 Acre

Lot 10 1.00 Acre



*Schools*

(E) Daybreak  
(M) Daybreak  
(H) Prairie

## NATURAL 68 ACRE OAK TREE ESTUARY

Lot Sizes May Vary Slightly During Final Plat Recording

- AVAILABLE LOTS
- CURRENTLY RESERVED
- SOLD
- MODEL HOME

• Gated Community • Greenbelted • Flat • One Acre Lots • Ubiquitous Nearby Parks • Convenient Location

We are currently breaking-ground in this uniquely endowed and conveniently located housing community. The peaceful, natural landscape offers surreal seclusion at a surprisingly advantageous location - near the intersection of NE 67th Ave and NE 219th St. Convenient commerce at nearby Battle Ground Village and immediate access to I-5 and I-205 puts the entire region within easy reach. 30 min to Downtown Portland, 20 min to Downtown Vancouver and 25 min to Portland International Airport.



Ron Wagner 360.907.4739

Jason Stenersen 360.772.2357

Chad Naeve 360.609.0111



## NEARBY

Whipple Creek Regional Park

Lewisville Regional Park